



MONTHLY MEMBERSHIP PROGRESS REPORT

District 2 S5

Results as of: 08/31/2018

GMT: GREGORY GILLIAM

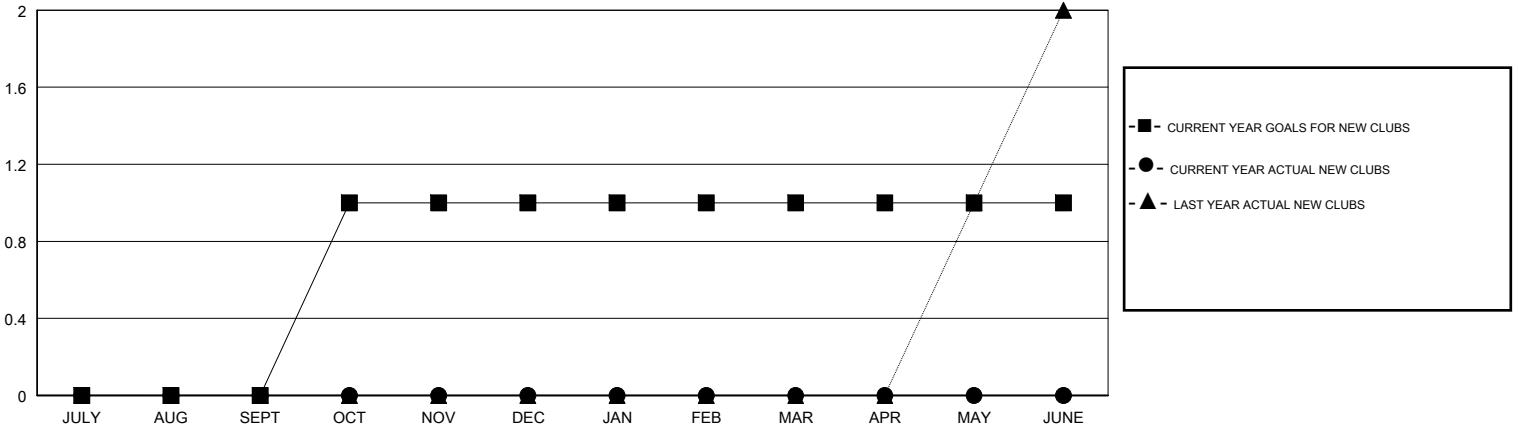
LOCATION TEXAS

GMT CA

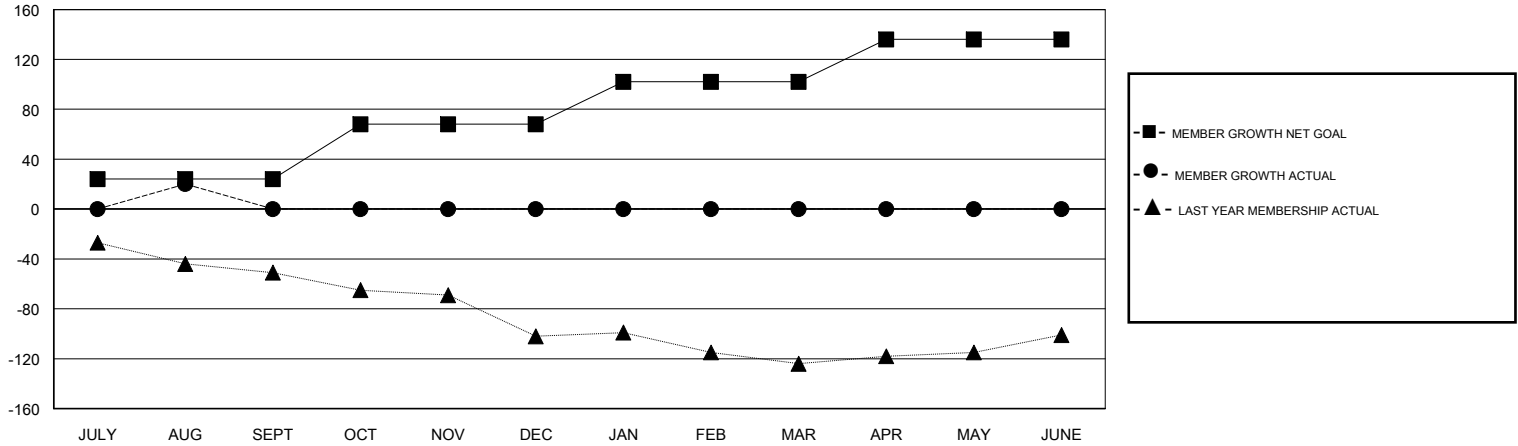
Clubs			
RESULTS FOR 2018-2019			
QUARTER	NEW CLUB GOAL	NEW CLUBS	DROPPED CLUBS
JULY/AUG/SEPT	0	0	0
OCT/NOV/DEC	1	0	0
JAN/FEB/MAR	0	0	0
APR/MAY/JUNE	0	0	0

Members			
RESULTS FOR 2018-2019			
QUARTER	MEMBER GROWTH NET GOAL	MEMBER GROWTH ACTUAL	DROPPED MEMBERS ACTUAL (including transfers)
JULY/AUG/SEPT	24	62	35
OCT/NOV/DEC	44	0	0
JAN/FEB/MAR	34	0	0
APR/MAY/JUNE	34	0	0

GOALS AND ACTUAL NEW CLUBS CUMULATIVE



GOALS AND ACTUAL MEMBERS CUMULATIVE



DROPPED CLUBS: 0	20 CLUBS OF 61 ADDED 1 OR MORE NEW MEMBERS	<u>GENDER DISTRIBUTION</u> MALE 1,502 (62.25%) FEMALE 911 (37.75%) Women Percentage Fiscal Year Goal: 40%
DROPPED MEMBERS	CLICK HERE FOR CUMULATIVE MEMBERSHIP DATA	TOTAL FAMILY UNIT MEMBERS 394
DECEASED 8		FAMILY MEMBERS PAYING HALF DUES 199
CLUB CANCELLED 0		
OTHER 27		
TOTAL 35		